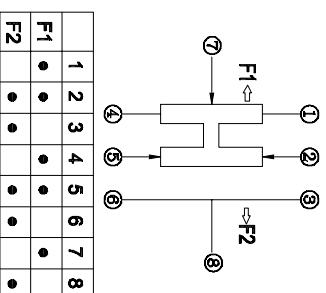


PCB Layout(Pattern side)

- Note:
1. Rating : DC 12V 50mA
  2. Contact Resistance :  $\leq 50m\Omega$
  3. Insulation Resistance: DC500V 1Minute
  4. Operating Temperature Range:  $-25^{\circ}C+80^{\circ}C$
  5. Ambient Humidity Used:  $\leq 85\%RH$
  6. Operating Force :  $200gf \pm 50gf$
  7. Operating Life : 10,000Cycles



Circuit Diagram

ITEM	PART NAME	TER'NO.	QTY.	MATERIAL	FINISHING	REMARK
⑤	Contact Spring	---	1	Phosphor bronze	Ag Plated	---
④	Cover	---	1	SUS	Natural	---
③	KNOB	---	1	PA10T	Black	---
②	Terminal	---	3	Bross	Ag Plated	---
①	Base	---	1	LCP	Black	---

APPROVALS	DATE	TITLE
DRAWN JKUN.LLU	2013/10/8	TOGGLE SWITCHES
CHECKED		ELECTRONICS CO.,LTD

ECN NO.	REV.	DATE.	DESCRIPTION.	CHANGE.	CHECK.	APPRO.	TOLERANCES ARE	ANGLE	UNIT:	SCALE:	PROJ:	SHEET	
	A		NEW				30 $\pm$ 0.15 10 $\pm$ 0.20 5 $\sim$ 10 $\pm$ 0.15 $\sim$ 5 $\pm$ 0.10	$\pm$ 0.30 $\pm$ 0.20 $\pm$ 0.15 $\pm$ 0.10	$\pm$ 2'	mm	1:1	PROJ:	SHEET 1 OF 1